

Turning **eggs** into valuable business



## Hatchery Packer

### Gentle Handling System for Fertile Eggs

Discover how the Hatchery Packer is able to improve performance and boost production.

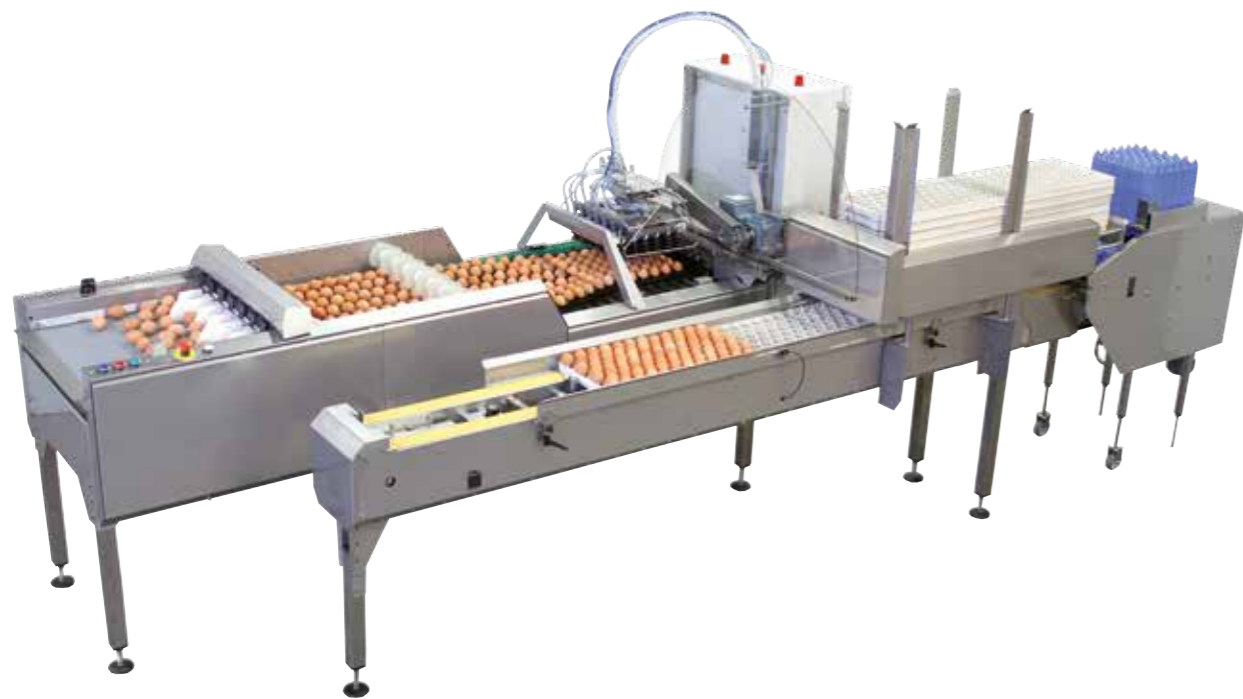
**SANOVO**   
TECHNOLOGY GROUP

# Best outcome for your eggs

Investing in packing systems is a long-term relationship, we understand this commitment very well, supplying equipment that meets your needs.

The Hatchery Packers are built tough with a "soft-spot" for eggs! Providing you with reliability and complete ease of mind, with no worry of either maintenance or costly down-time. The Hatchery Packers just keep working.

Designed with your farm in mind our equipment is simple, robust, reliable and flexible. Maximum up-time + 100% correct packing + ease of maintenance, all day, every day, is the key to optimizing your business and profit!

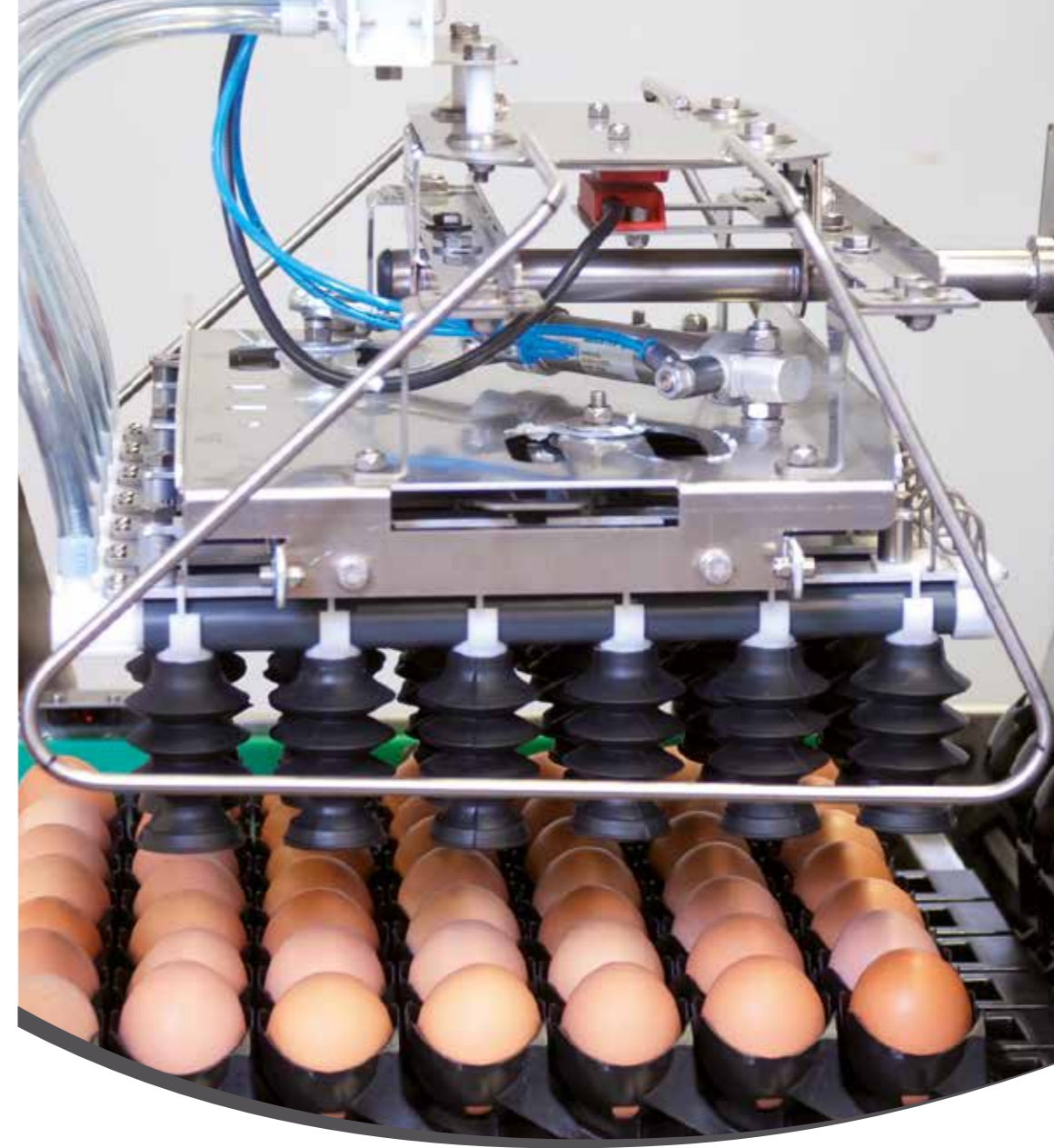


The Hatchery Packer is the clear choice when hatchability & bio-security is important to the farm's overall operation.

*When producing fertile eggs, one of the most critical focus areas is the correct placement of eggs into the setter tray. This process must be done gently to protect the integrity of the egg. Our technology ensures the fertile egg is set point-down, with no occurrence of cracks, resulting in increased hatchability rates and the highest amount of healthy happy chicks.*

*Our machine takes care of the fertile egg and does not inflict any costly damage. The Hatchery Packer minimizes human interaction and thereby the potential thread of introducing outside contamination by limiting the contact with each individual egg.*

*Capacity up to 28,000 eggs / hour depending on setter tray type.*



YOUR BUSINESS  
IS OUR FIRST  
PRIORITY

SANOVO TECHNOLOGY GROUP's definition of quality is based on an understanding and appreciation of our customer's needs. Demand of performance, up-time and reliability from equipment is always required. Starting at product conception through manufacture via quality control, in-house testing and product distributing, all the way to after-sales service, SANOVO offers the customer much more than simply a machine – you also benefit from a superior level of overall company support.

## Understand hatchery packing Your guide to success

- The hatchability rate of fertile eggs hinges on gentle handling, thus greatly reducing the incidence of costly egg cracks.
- The hatchability of fertile eggs is also dependent on correct positioning in the tray; the point-down principle.
- Reducing direct human contact with the egg improves cross-contamination controls resulting in better chick quality outcomes and overall performance.
- Delivering a high level of egg-pack uniformity.

The SANOVO Hatchery Packer supports the collection and packing of fertilized eggs. These eggs are delivered through a

conveyor system and placed on setter trays, ready for shipment to the hatchery.

Most important is the correct positioning of the live egg into the tray. If point-down is not achieved in this process hatchability will be negatively compromised, directly effecting the quality of the egg pack. An egg packed incorrectly will result in a loss of investment.

Damage to the egg, either broken or hair-line cracks, must be prevented at all costs. Any cracks in the shell, big or small, exposes the embryo to the possibility of contamination during its growth cycle in the incubator. A machine tasked with packing eggs must do so without compromising the successful development of the embryo.

# Features & Benefits

## GENTLE TRANSFER SUCTION HEAD

Our machine is outfitted with long vacuum suction cups made of natural rubber. As a result, this superior cup has an extended life-span and durability second to none.

### How you benefit

The Hatchery Packer equipped with special designed suction cups provide a more reliable transfer, able to pick up both large and small eggs, leaving no eggs behind. Eliminating the possibility of costly cracks and ruined eggs after drops.



## EASY SWITCHING BETWEEN TRAYS

Equipped with a simple switch to run either the setter tray or 30 plastic or paper tray.

### How you benefit

A simple flick of the switch is all that is required, no loss of production time or difficult change-outs. Extremely operator friendly and fast. When production does not require the 30 tray, simply disconnect the denester and set it aside.



## FLEXIBLE CUP

The cup conveyor system "scopes" the eggs from the orientor system. This scoping motion has minimal to no impact on the egg, compared to a straight drop with no flex. The plastic scopes are mounted on a flexible lever, further suspending the egg's transition from the orientor.

### How you benefit

The world's most-gentle way of transferring eggs, eliminating costly egg cracks.



## EGG COUNTER

Every Hatchery Packer is equipped with an egg counter, allowing the farmer to track production numbers and development of the breeder flock.

### How you benefit

With an integrated egg counter the administrative task of counting is left to the machine.



## AIR-CUSHIONED ROLLERS

Equipped with unique air-cushioned rollers, with integrated orientor flaps ensuring that the eggs are placed in the coveted point-down position.

### How you benefit

Eggs heading to the hatchery are always oriented correctly maximizing hatchability rates. Utilizing the Hatchery Packer delivers an overall high quality egg-pack resulting in greater performance and successful outcomes.



## SAFETY

The transfer head collecting the eggs, from the conveyor cups to the incubator setter trays, is well protected against operator interference.

### How you benefit

As a European based manufacturer we understand that just as important to the investment of your facility, is the safety and well-being of your people. All of our equipment is designed based on European Guidelines, providing the highest levels of safety and operational standards.



# Equipment options



## TROLLEY LOADER

When further automation is needed a trolley loader can be introduced to the line with the ability to handle all setter trays, with the added functionality to stack 30 trays. The footprint is incredibly small and equipped with a user-friendly interface.



## FIRST AID AND CRITICAL PARTS KITS

Although your Hatchery Packer is delivered with spare parts SANOVO TECHNOLOGY GROUP offer you a First Aid Kit which enables you to do most of the regular maintenance. Further we also offer a Critical Parts Kit containing those parts that will ensure ongoing production in any case.



## ACCUMULATOR EXTENSION

Every farm and project is different, whether new or existing structures. SANOVO TECHNOLOGY GROUP has a wide range of accumulator extensions delivering flexibility and solutions.

These tables create the flexibility to connect one or multiple egg conveyors, either straight to the packer or at an angle, making sure a solution is achieved.



## EGG PRINT / CODER

When egg traceability is required, SANOVO TECHNOLOGY GROUP is able to offer several print or code solutions. Coding the product can be accomplished through stamping techniques or with a more dynamic and flexible printing method.



## FARMGRADER 80

This universal Farmgrader 80 can be used in combination with any hatchery packer, farm packer, egg conveyor belt, or as a stand-alone system. The Farmgrader 80 separates incoming eggs in up to four different sizes or weight categories. When used in combination with a hatchery packer the machine can separate non-hatching sizes out of the incoming egg-flow.

This grader has a compact design combined with detachable shelves. In addition, critical data can be transferred to a USB device and imported into MS Excel. Not only ideal for grading eggs at the breeder farm, this technology can also be utilized in poultry operations where pre-weight selection is required.

- 28,000 eggs / hour
- Number of exits: Standard 3
- 4 different weight classes can be programmed per exit
- Weight classes are programmed with touchscreen
- Digital load cell scales
- Operation via color touchscreen
- Flexible locations for control box
- Stainless steel washable construction



## 2 YEAR WARRANTY

SANOVO TECHNOLOGY GROUP's definition of quality is based on an understanding of customer needs where demand of performance, up-time and reliability of equipment is never compromised. Starting at production conception through manufacturing via quality control, in-house testing and product distribution all the way to after-sales service, SANOVO TECHNOLOGY GROUP offers the customer much more than simply a machine – you also benefit from a superior level of overall company support.

# Technical Drawings

## HATCHERY PACKER

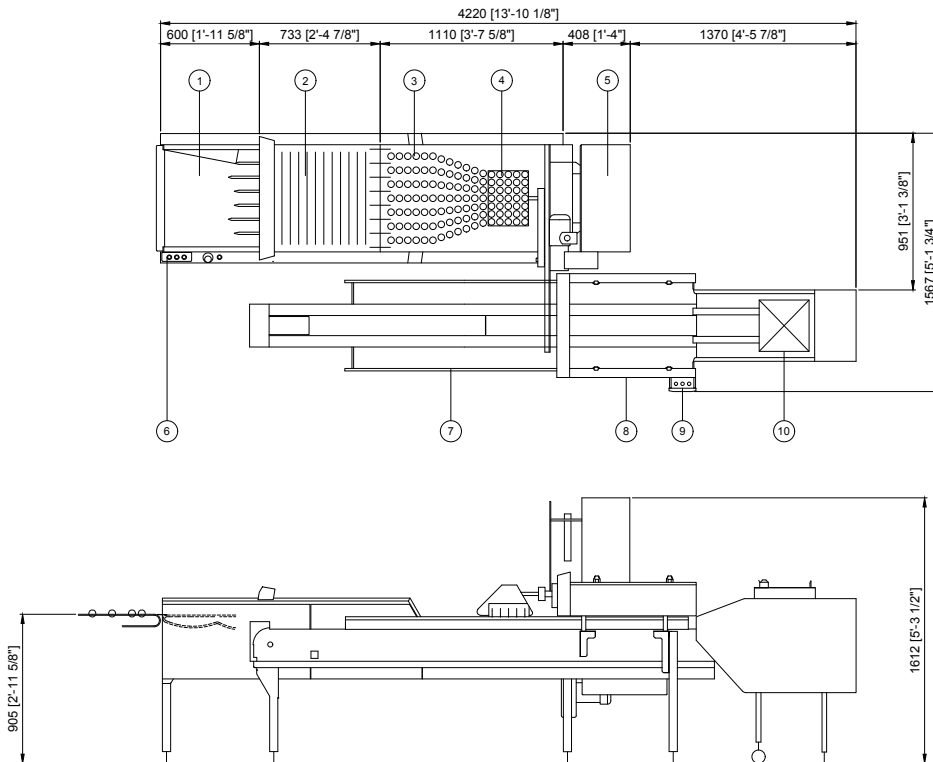
Max capacity: Up to 78 cases/hour (28,000 eggs/hour) depending on the type of setter tray

Energy: 1.9 kVA

Power supply: 230 V-0-ground, 1.0-phase-AC, 50/60 Hz

Explanation drawing:

- |     |                          |
|-----|--------------------------|
| 1.  | Accumulator              |
| 2.  | Egg orientation          |
| 3.  | Cups                     |
| 4.  | Suction head             |
| 5.  | Electrical cabinet       |
| 6.  | Operator panel           |
| 7.  | Packing lane             |
| 8.  | Settertray denester      |
| 9.  | Tray switching panel     |
| 10. | Denester for 30-egg tray |



**SANOVO**   
TECHNOLOGY GROUP

SANOVO TECHNOLOGY GROUP

Odense - Denmark

TEL +45 66 16 28 32

info@sanovogroup.com

 a  
**THORNICO**  
Company



**SILVER**  
PurePrint® by **KLS**  
Produced 100% biodegradable  
by KLS PurePrint A/S

[www.sanovogroup.com](http://www.sanovogroup.com)